



HARBOURTOWN  
VILLAGE  
AT WAVERLY BEACH

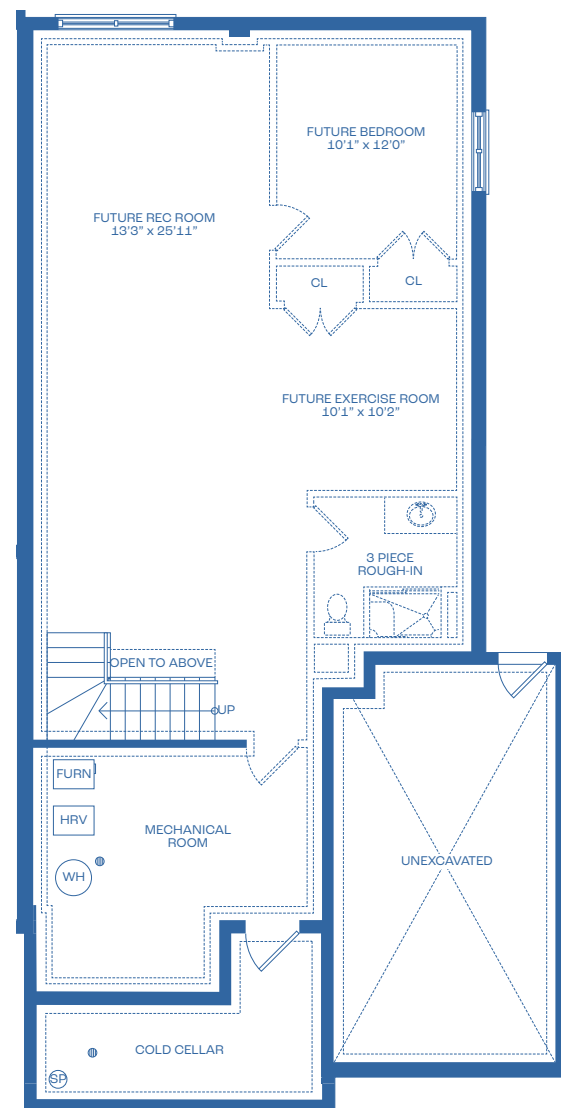
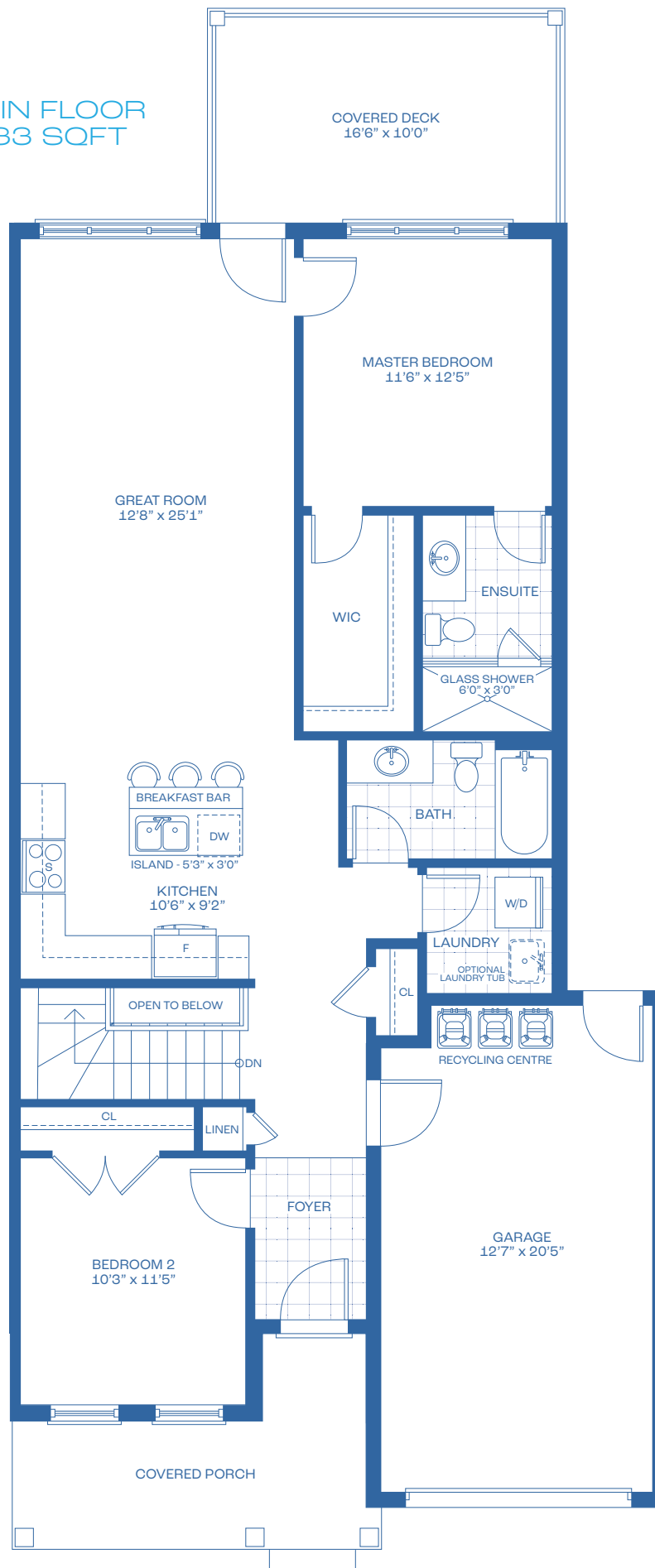
# BUNGALOW TOWN

1233 SQFT  
INTERIOR UNIT



OPTION 1A

MAIN FLOOR  
1233 SQFT



BASEMENT  
902 SQFT  
Excluding  
Mechanical Room

Floorplans may change with elevation. Artist's concept only. Construction of dwelling may not be exactly as shown. Some features shown may be optional extras at additional cost. Exterior elevations, renderings or sketches are subject to architectural controls, the availability of materials to the vendor at construction of the dwelling, and site conditions. Some windows shown on side elevations may not be available due to the applicable side yard setback. Accordingly, all details, dimensions, treatments, specifications and features shown may be changed by the vendor, the Municipality, the developer or the vendor's control architect, in their sole and unfettered discretion at any time without notice. Actual usable floor space may vary from stated floor area. Due to site conditions and engineering or structural requirements, individual room dimensions may vary. Square footage is measured using the methods and tolerances prescribed by Bulletin 22 published by the Tarion Warranty Corporation. To view the acceptable measures and tolerances, please visit Bulletin 22 at [www.tarion.com](http://www.tarion.com). Features identified as "Optional" or "Opt" are at additional cost, and may not be available based on the stage of construction of the home. The location of fixtures such as electrical panels, hot water tanks, sump pumps or furnaces may change due to site conditions or engineering requirements. Features shown "where grade permits" or "subject to grading" may not be available based on the grading of the land, and may in some cases require adjacent floor areas to be lowered by one riser, or "sunken". E & O.E.

**SILVERGATE**  
HOMES

905.680.6000 | [silvergatehomes.com](http://silvergatehomes.com)